

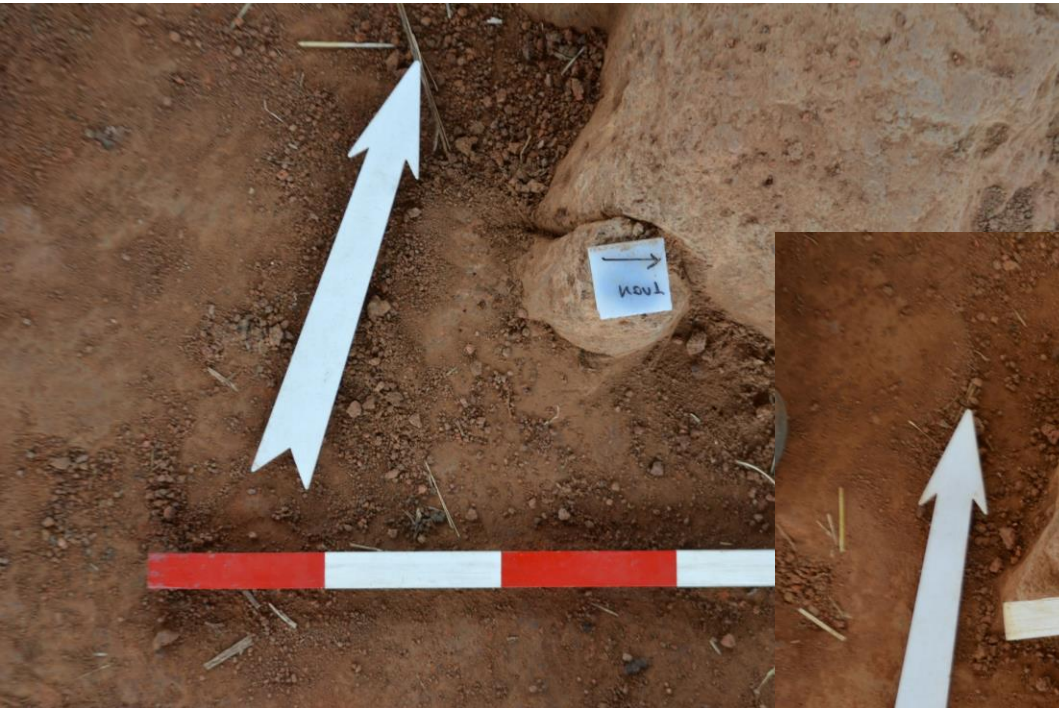
Sampling techniques for archaeomagnetic studies

Dr. Elina Aidona

The tube method



The Plexiglas method..



The bulk sample collection method..



The bulk sample collection method..



The bulk sample collection method..



The bulk sample collection method..



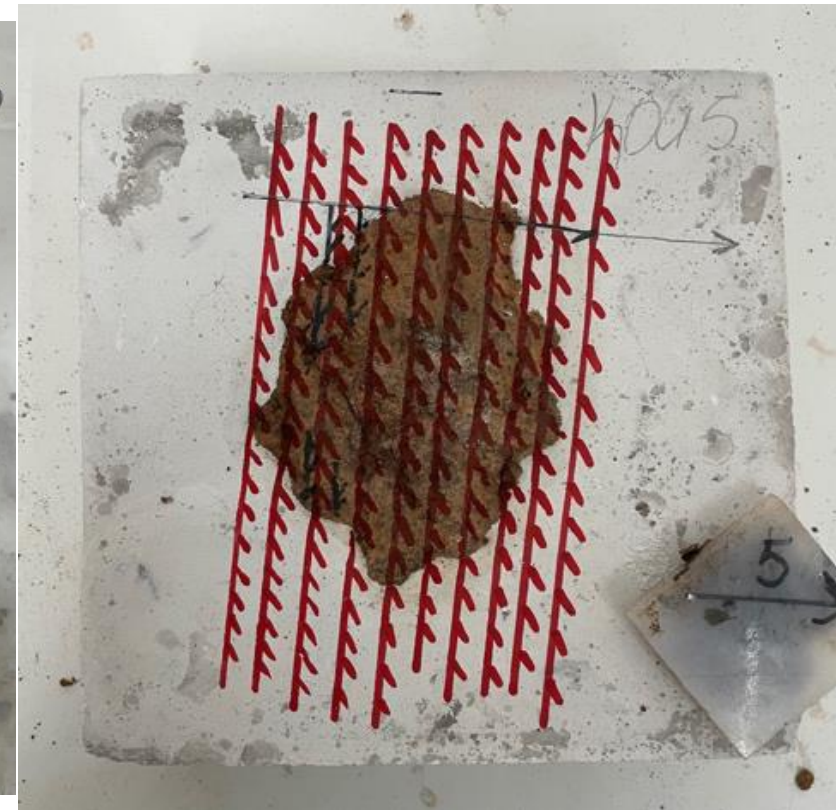
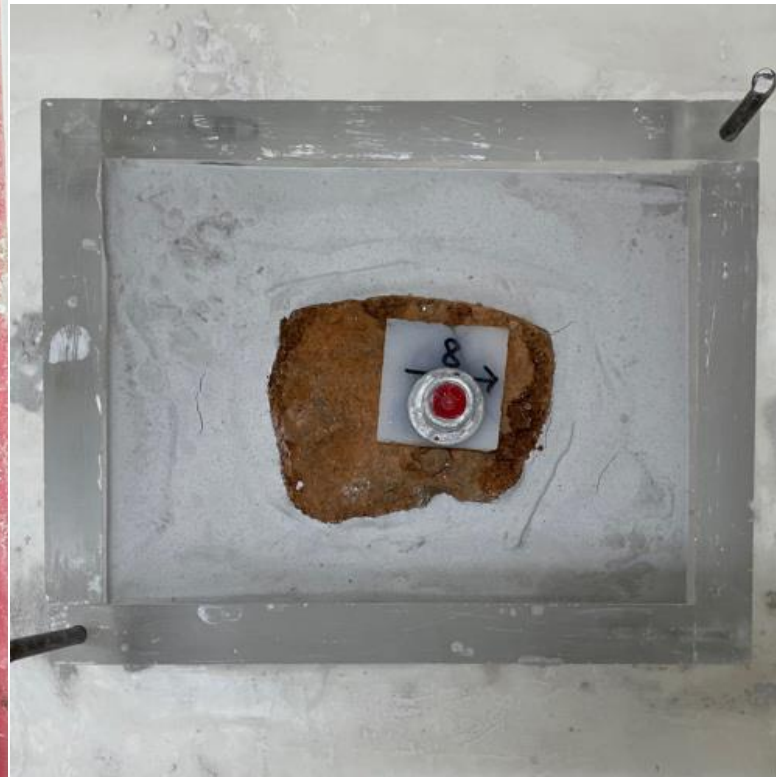
Orientation of the samples



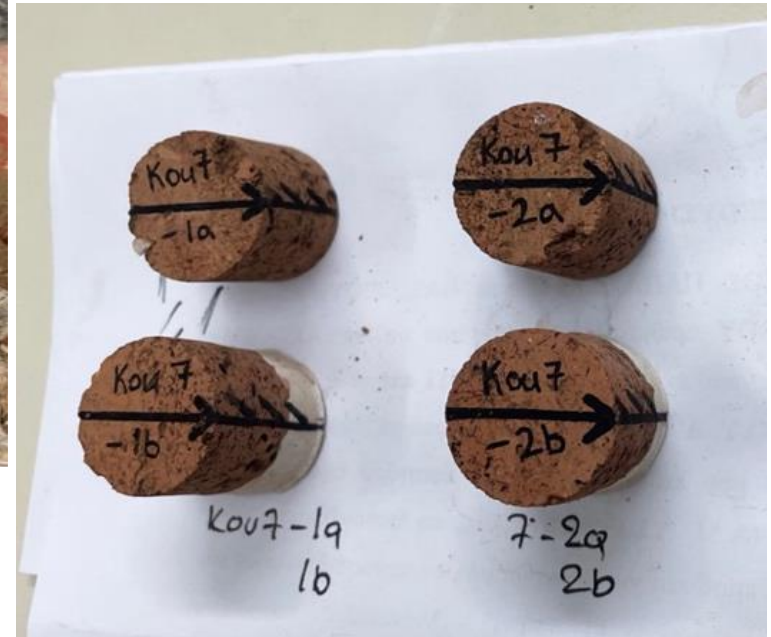
Laboratory preparation



Laboratory preparation



Laboratory preparation



Soft core method..



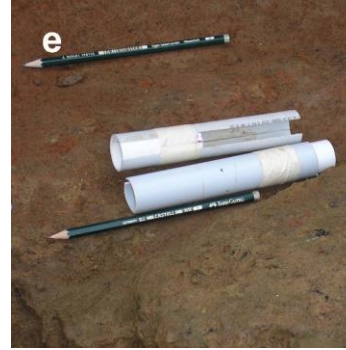
(b) With the help of the plastic cap the steel tube is pushed into the material (up to 8 cm) and the cap is removed.



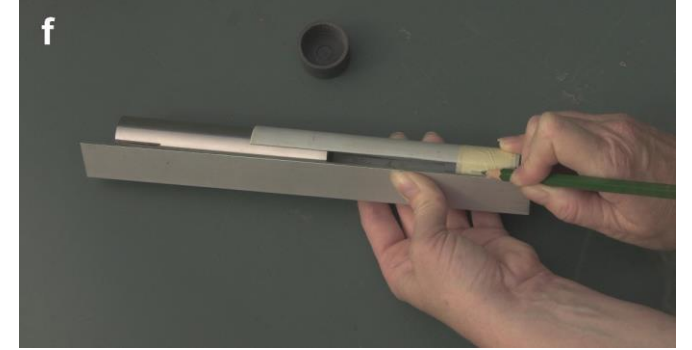
(c) The core is then oriented with the modified orienting fixture, sun and magnetic azimuth as well as dip are measured.



(d) The mark is drawn with a marker on the tube.

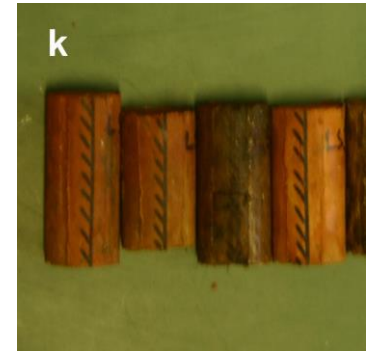


(e) For protection of the core two half PVC tubes and a PVC cylinder (or a cylindrical plastic box) are put together with masking tape to form a support. It is important that there is a slot, as seen on the picture, where later the mark on the core can be drawn.



(f) The tube with the core is then removed and inserted in the support. The orientation mark from the tube is thereafter transferred with a pencil along the angular slot to tape on the support.

Soft core method..



(g) Finally, the core is pushed with the spar and the closed tube into the support and the tube is also fixed with the masking tape.

(h) The soft cores are now well protected and can be brought to the laboratory.

(i) The upper cylindrical box is removed and *Stone Strengthner* is poured in the support to penetrate the soft core. The consolidation takes only some days, if one application of the strengthner is sufficient.

(j) After that the orientation mark is transferred with a marker and the angle profile slat to core, now the tape is removed and **k)** the result are consolidated soft cores, **(l)** which can be cut into standard palaeomagnetic specimens of 22 mm length.